

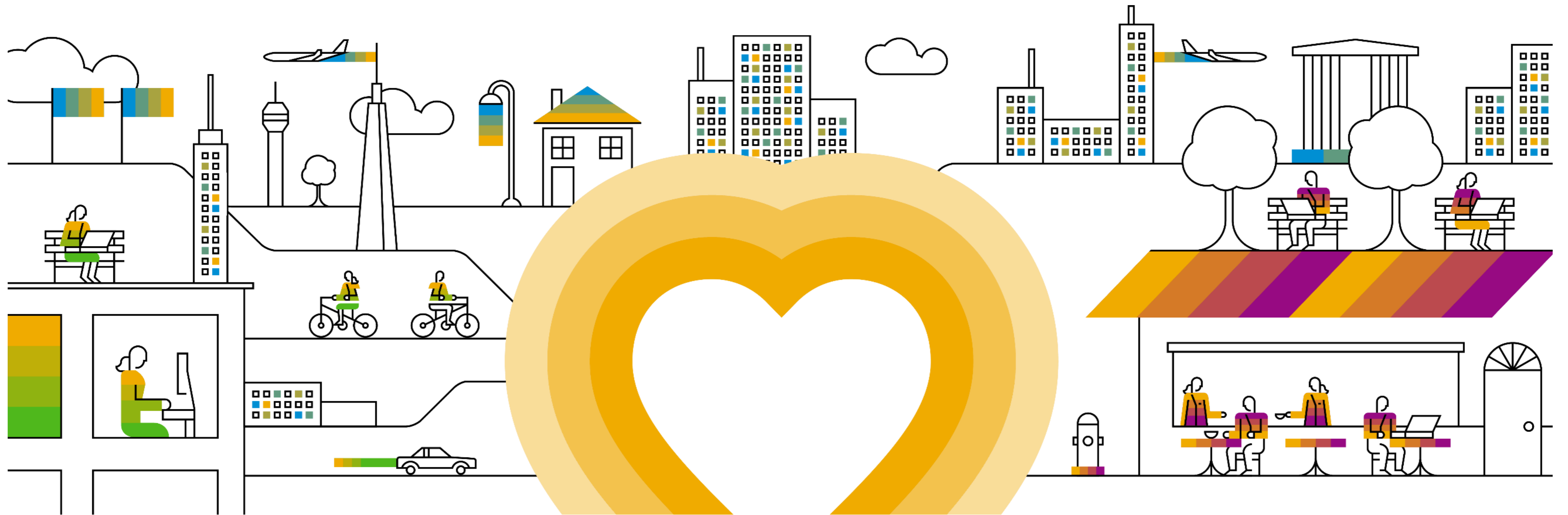
2019년 SAP 정규 교육 일정 안내

SAP교육사업본부



02-2194-2660

education.korea@sap.com



I	F	A	D	DK
Introduction	Foundation	Academy	Detailed	Delta Knowledge

SAP S/4HANA

Solution	Type	Level	Course Code	과정명	교육 일수	교육비 (VAT별도)	Q1		Q2		Q3		Q4		
							시작일	종료일	시작일	종료일	시작일	종료일	시작일	종료일	
All	Overview	I	S4H00	처음 시작하는 SAP 입문과정	3	1,575,000	2019-01-21	2019-01-23	2019-03-25	2019-03-27	2019-07-08	2019-07-10	2019-10-14	2019-10-16	
		D	KS4H410	SAP S/4HANA Analytics 과정	5	2,625,000	2019-03-11	2019-03-15	2019-05-20	2019-05-24	2019-09-02	2019-09-06			
	Integration	D	TS410	S/4HANA 통합 비즈니스 프로세스	5	2,625,000	2019-02-18	2019-02-22	2019-05-20	2019-05-24	2019-08-19	2019-08-23	2019-11-18	2019-11-22	
		F	S4C00	SAP S/4HANA Cloud Overview	5	2,625,000			2019-05-06	2019-05-10			2019-11-04	2019-11-08	
FCM	FI	F	S4F10	S/4HANA 재무회계 기초과정 (FI)	5	2,625,000	2019-02-11	2019-02-15	2019-05-27	2019-05-31	2019-07-15	2019-07-19	2019-10-28	2019-11-01	
		A	KFI400	[S/4HANA 아카데미] FI All: SAP Financial Accounting	20	8,000,000	2019-03-04	2019-03-29	2019-06-17	2019-07-12	2019-08-05	2019-08-30	2019-12-02	2019-12-27	
		A	TS4F01_1	[S/4HANA 아카데미] FI 1: SAP Financial Accounting I_1	5	2,625,000	2019-03-04	2019-03-08	2019-06-17	2019-06-21	2019-08-05	2019-08-09	2019-12-02	2019-12-06	
		A	TS4F01_2	[S/4HANA 아카데미] FI 2: SAP Financial Accounting I_2	5	2,625,000	2019-03-11	2019-03-15	2019-06-24	2019-06-28	2019-08-12	2019-08-16	2019-12-09	2019-12-13	
		A	TS4F02_1	[S/4HANA 아카데미] FI 3: SAP Financial Accounting II_1	5	2,625,000	2019-03-18	2019-03-22	2019-07-01	2019-07-05	2019-08-19	2019-08-23	2019-12-16	2019-12-20	
		A	TS4F02_2	[S/4HANA 아카데미] FI 4: SAP Financial Accounting II_2	5	2,625,000	2019-03-25	2019-03-29	2019-07-08	2019-07-12	2019-08-26	2019-08-30	2019-12-23	2019-12-27	
		D	S4F16	Financial Closing Cockpit in SAP S/4HANA	2	1,050,000			2019-04-08	2019-04-09	2019-09-23	2019-09-24			
		D	MDG100	SAP Master Data Governance(MDG)	5	2,625,000	2019-03-11	2019-03-15					2019-11-25	2019-11-29	
	CO	F	S4F20	S/4HANA 관리회계 기초과정 (CO)	5	2,625,000	2019-02-11	2019-02-15	2019-05-27	2019-05-31	2019-07-15	2019-07-19	2019-10-28	2019-11-01	
		A	KCO400	[S/4HANA 아카데미] CO All: SAP Management Accounting	20	8,000,000	2019-03-04	2019-03-29	2019-06-17	2019-07-12	2019-08-05	2019-08-30	2019-12-02	2019-12-27	
		A	TS4F03_1	[S/4HANA 아카데미] CO 1: SAP Management Accounting I_1	5	2,625,000	2019-03-04	2019-03-08	2019-06-17	2019-06-21	2019-08-05	2019-08-09	2019-12-02	2019-12-06	
		A	TS4F03_2	[S/4HANA 아카데미] CO 2: SAP Management Accounting I_2	5	2,625,000	2019-03-11	2019-03-15	2019-06-24	2019-06-28	2019-08-12	2019-08-16	2019-12-09	2019-12-13	
		A	TS4F04_1	[S/4HANA 아카데미] CO 3: SAP Management Accounting II_1	5	2,625,000	2019-03-18	2019-03-22	2019-07-01	2019-07-05	2019-08-19	2019-08-23	2019-12-16	2019-12-20	
		A	TS4F04_2	[S/4HANA 아카데미] CO 4: SAP Management Accounting II_2	5	2,625,000	2019-03-25	2019-03-29	2019-07-08	2019-07-12	2019-08-26	2019-08-30	2019-12-23	2019-12-27	
		D	S4F23	Product Cost Planning in SAP S/4HANA	5	2,625,000	2019-02-18	2019-02-22			2019-07-01	2019-07-05			
		D	S4F07	Financial Reporting in SAP S/4HANA	2	1,050,000			2019-04-11	2019-04-12			2019-10-17	2019-10-18	
	All	D	S4F04	SAP Central Finance in SAP S/4HANA	5	2,625,000			2019-06-10	2019-06-14					
		Cash Mgmt.	D	S4F41	Implementing Cash Management in SAP S/4HANA	5	2,625,000			2019-04-15	2019-04-19	2019-09-02	2019-09-06		
			D	S4F50	Processes in Treasury and Risk Management in SAP S/4HANA	5	2,625,000			2019-04-22	2019-04-26	2019-09-16	2019-09-20		
		TR	D	S4F50	Processes in Treasury and Risk Management in SAP S/4HANA	5	2,625,000			2019-04-22	2019-04-26	2019-09-16	2019-09-20		
	SCM	MM	F	S4500	S/4HANA 자재관리 기초과정 (MM)	4	2,100,000	2019-02-11	2019-02-14	2019-05-27	2019-05-30	2019-07-15	2019-07-18	2019-10-28	2019-10-31
			A	KMM400	[S/4HANA 아카데미] MM All: SAP Material Management	20	8,000,000	2019-03-04	2019-03-29	2019-06-17	2019-07-12	2019-08-05	2019-08-30	2019-12-02	2019-12-27
			A	TS451_1	[S/4HANA 아카데미] MM 1: SAP Material Management I_1	5	2,625,000	2019-03-04	2019-03-08	2019-06-17	2019-06-21	2019-08-05	2019-08-09	2019-12-02	2019-12-06
			A	TS451_2	[S/4HANA 아카데미] MM 2: SAP Material Management I_2	5	2,625,000	2019-03-11	2019-03-15	2019-06-24	2019-06-28	2019-08-12	2019-08-16	2019-12-09	2019-12-13
			A	TS452_1	[S/4HANA 아카데미] MM 3: SAP Material Management II_1	5	2,625,000	2019-03-18	2019-03-22	2019-07-01	2019-07-05	2019-08-19	2019-08-23	2019-12-16	2019-12-20
			A	TS452_2	[S/4HANA 아카데미] MM 4: SAP Material Management II_2	5	2,625,000	2019-03-25	2019-03-29	2019-07-08	2019-07-12	2019-08-26	2019-08-30	2019-12-23	2019-12-27
		PP	F	S4200	S/4HANA 생산관리 기초과정 (PP)	5	2,625,000	2019-02-11	2019-02-15	2019-05-27	2019-05-31	2019-07-15	2019-07-19	2019-10-28	2019-11-01
			A	KPP400	[S/4HANA 아카데미] PP All: SAP Product Planning	20	8,000,000	2019-03-04	2019-03-29	2019-06-17	2019-07-12	2019-08-05	2019-08-30	2019-12-02	2019-12-27
			A	TS421_1	[S/4HANA 아카데미] PP 1: SAP Product Planning I_1	5	2,625,000	2019-03-04	2019-03-08	2019-06-17	2019-06-21	2019-08-05	2019-08-09	2019-12-02	2019-12-06
			A	TS421_2	[S/4HANA 아카데미] PP 2: SAP Product Planning I_2	5	2,625,000	2019-03-11	2019-03-15	2019-06-24	2019-06-28	2019-08-12	2019-08-16	2019-12-09	2019-12-13
			A	TS422_1	[S/4HANA 아카데미] PP 3: SAP Product Planning II_1	5	2,625,000	2019-03-18	2019-03-22	2019-07-01	2019-07-05	2019-08-19	2019-08-23	2019-12-16	2019-12-20
			A	TS422_2	[S/4HANA 아카데미] PP 4: SAP Product Planning II_2	5	2,625,000	2019-03-25	2019-03-29	2019-07-08	2019-07-12	2019-08-26	2019-08-30	2019-12-23	2019-12-27
SD		F	S4600	S/4HANA 판매관리 기초과정 (SD)	4	2,100,000	2019-02-11	2019-02-14	2019-05-27	2019-05-30	2019-07-15	2019-07-18	2019-10-28	2019-10-31	
		A	KSD600	[S/4HANA 아카데미] SD All: SAP Sales & Distribution	20	8,000,000	2019-03-04	2019-03-29	2019-06-17	2019-07-12	2019-08-05	2019-08-30	2019-12-02	2019-12-27	
		A	TS461_1	[S/4HANA 아카데미] SD 1: SAP Sales & Distribution I_1	5	2,625,000	2019-03-04	2019-03-08	2019-06-17	2019-06-21	2019-08-05	2019-08-09	2019-12-02	2019-12-06	
		A	TS461_2	[S/4HANA 아카데미] SD 2: SAP Sales & Distribution I_2	5	2,625,000	2019-03-11	2019-03-15	2019-06-24	2019-06-28	2019-08-12	2019-08-16	2019-12-09	2019-12-13	
		A	TS462_1	[S/4HANA 아카데미] SD 3: SAP Sales & Distribution II_1	5	2,625,000	2019-03-18	2019-03-22	2019-07-01	2019-07-05	2019-08-19	2019-08-23	2019-12-16	2019-12-20	
		A	TS462_2	[S/4HANA 아카데미] SD 4: SAP Sales & Distribution II_2	5	2,625,000	2019-03-25	2019-03-29	2019-07-08	2019-07-12	2019-08-26	2019-08-30	2019-12-23	2019-12-27	
TM		D	ZTM920	SAP (S/4HANA Embedded) TM 구축을 위한 Functional Consultant 양성 과정	10	3,600,000					2019-07-01	2019-07-12			
		D	ZTM140	SAP (S/4HANA Embedded) TM 구축을 위한 개발자 전문 과정	5	2,625,000					2019-07-15	2019-07-19			
EWM		D	ZEWM110	Extend Warehouse Management (EWM)	10	4,000,000	2019-03-04	2019-03-15					2019-10-14	2019-10-25	
		D	ZQM101	SAP S/4HANA Quality Management(QM)	10	5,250,000			2019-05-13	2019-05-24			2019-11-11	2019-11-22	

※ 안내 사항

모든 교육비는 부가세가 포함되지 않은 금액입니다.

상기 일정은 변동 가능성이 있습니다.

커리큘럼을 포함한 교육 정보 확인, 교육 신청은 SAP교육사업본부 홈페이지(www.saptraining.co.kr)를 통해 진행할 수 있습니다.

상기 과정 외 개설을 원하는 과정이 있으면 SAP교육사업본부로 연락 주시기 바랍니다.

I	F	A	D	DK
Introduction	Foundation	Academy	Detailed	Delta Knowledge

SAP S/4HANA (Upskilling for SAP ERP Experts)

기존 ECC버전에서 S/4HANA로 전환될 때 달라지는 차이점만을 설명한 교육입니다. (해당 모듈에 대한 지식과 운영 경험 필수)

Solution	Type	Level	Course Code	과정명	교육 일수	교육비 (VAT별도)	Q1		Q2		Q3		Q4	
							시작일	종료일	시작일	종료일	시작일	종료일	시작일	종료일
All	Overview	I	S4H01	ECC 사용자를 위한 SAP S/4HANA 입문과정	2	1,050,000	2019-01-10	2019-01-11	2019-06-27	2019-06-28			2019-10-10	2019-10-11
FCM	FI	DK	S4F01	Financial Accounting in SAP S/4HANA	2	1,050,000	2019-01-24	2019-01-25	2019-04-02	2019-04-03	2019-07-02	2019-07-03	2019-10-15	2019-10-16
	CO	DK	S4F02	Management Accounting in SAP S/4HANA	2	1,050,000	2019-01-28	2019-01-29	2019-04-04	2019-04-05	2019-07-04	2019-07-05	2019-10-17	2019-10-18
	All	DK	S4F03	Conversion of Accounting to SAP S/4HANA	2	1,050,000	2019-01-30	2019-01-31	2019-04-08	2019-04-09	2019-07-08	2019-07-09	2019-10-21	2019-10-22
SCM	All	DK	S4LG1	Innovative Logistics Processes in SAP S/4HANA Enterprise Management	2	1,050,000	2019-01-24	2019-01-25	2019-04-11	2019-04-12	2019-07-11	2019-07-12	2019-10-24	2019-10-25
	MM	DK	S4PR1	S/4HANA Enhancements to Processes in Procurement	1	525,000	2019-01-28	2019-01-28	2019-04-15	2019-04-15	2019-07-15	2019-07-15	2019-10-28	2019-10-28
	PP	DK	S4MA1	S/4HANA Manufacturing - Functions & Innovations	2	1,050,000	2019-01-29	2019-01-30	2019-04-16	2019-04-17	2019-07-16	2019-07-17	2019-10-29	2019-10-30
	SD	DK	S4SD1	S/4HANA Sales - Functions & Innovations	1	525,000	2019-01-31	2019-01-31	2019-04-19	2019-04-19	2019-07-18	2019-07-18	2019-10-31	2019-01-31

SAP ERP

ECC 버전의 FCM, SCM 아카데미 과정은 온라인 또는 블렌디드 과정으로 수강할 수 있습니다(www.sapelearning.co.kr). 수료 후 인증시험에 응시할 수 있습니다.

HCM 아카데미 All 과정은 인증시험 포함 과정입니다. 마지막 주 금요일에 인증시험이 진행됩니다.

Solution	Type	Level	Course Code	과정명	교육 일수	교육비 (VAT별도)	Q1		Q2		Q3		Q4	
							시작일	종료일	시작일	종료일	시작일	종료일	시작일	종료일
FCM	FI	A	Blended	[Blended] FI : SAP Financial Accounting	68	3,200,000	2019-02-07	2019-04-15	2019-04-11	2019-06-19	2019-08-08	2019-10-16	2019-10-10	2019-12-18
	CO	A	Blended	[Blended] CO : SAP Management Accounting	68	3,200,000	2019-01-10	2019-03-18	2019-05-09	2019-07-16	2019-07-11	2019-09-19	2019-11-07	2020-01-15
SCM	MM	A	Blended	[Blended] MM : Material Management	68	3,200,000	2019-01-10	2019-03-18	2019-05-09	2019-07-16	2019-07-11	2019-09-19	2019-11-07	2020-01-15
	PP	A	Blended	[Blended] PP : Product Planning	68	3,200,000	2019-02-07	2019-04-15	2019-04-11	2019-06-19	2019-08-08	2019-10-16	2019-10-10	2019-12-18
	SD	A	Blended	[Blended] SD : Sales & Distribution	68	3,200,000	2019-01-10	2019-03-18	2019-05-09	2019-07-16	2019-07-11	2019-09-19	2019-11-07	2020-01-15
							2019-03-07	2019-05-15			2019-09-12	2019-11-20		
PLM	EAM	D	ZPM101	Enterprise Asset Management (EAM)	10	4,000,000			2019-06-10	2019-06-21			2019-11-04	2019-11-15
	PS	D	ZPS101	Project System (PS)	10	4,000,000	2019-03-18	2019-03-29					2019-10-14	2019-10-25
HCM	HR	A	KHR300	[아카데미] HR All: SAP Human Resource (인증시험 포함)	20	6,640,000			2019-05-06	2019-05-31			2019-10-14	2019-11-08
		A	THR10_1	[아카데미] HR 1: 개요 및 Master Data 생성 및 관리	5	2,000,000			2019-05-06	2019-05-10			2019-10-14	2019-10-18
		A	THR10_2	[아카데미] HR 2: 근태관리	5	2,000,000			2019-05-13	2019-05-17			2019-10-21	2019-10-25
		A	THR12_1	[아카데미] HR 3: 급여 및 리포팅	5	2,000,000			2019-05-20	2019-05-24			2019-10-28	2019-11-01
		A	THR12_2	[아카데미] HR 4: 조직관리 및 권한 설정	4	1,600,000			2019-05-27	2019-05-30			2019-11-04	2019-11-07
		D	ZHR100	IT 운영담당자를 위한 SAP HR 한국형 급여 심화 과정	3	1,200,000	2019-03-11	2019-03-15			2019-08-26	2019-08-30		

※ 안내 사항

모든 교육비는 부가세가 포함되지 않은 금액입니다.

상기 일정은 변동 가능성이 있습니다.

커리큘럼을 포함한 교육 정보 확인, 교육 신청은 SAP교육사업본부 홈페이지(www.saptraining.co.kr)를 통해 진행할 수 있습니다.

상기 과정 외 개설을 원하는 과정이 있으면 SAP교육사업본부로 연락 주시기 바랍니다.

I	F	A	D	DK
Introduction	Foundation	Academy	Detailed	Delta Knowledge

Database & Technology

Database & Technology 아카데미 All 과정은 인증시험 포함 과정입니다. 마지막 주 금요일에 인증시험이 진행됩니다.

Solution	Type	Level	Course Code	과정명	교육 일수	교육비 (VAT별도)	Q1		Q2		Q3		Q4	
							시작일	종료일	시작일	종료일	시작일	종료일	시작일	종료일
UX	UI / Fiori	I	U100	SAP Fiori Foundation	2	1,050,000			2019-04-11	2019-04-12	2019-09-26	2019-09-27	2019-11-28	2019-11-29
		D	UX403	SAP Fiori Elements Development	2	1,050,000	2019-01-28	2019-01-29	2019-06-27	2019-06-28				
		D	ZUX410	Fiori 개발자 전문 과정 (Developing SAP Fiori UIs and SAPUI5)	5	2,625,000	2019-01-28	2019-02-01	2019-04-15	2019-04-19	2019-07-01	2019-07-05	2019-10-14	2019-10-18
		D	ZADM100	SAP System Administration for SAP S/4HANA and Business Suite	5	2,625,000	2019-03-25	2019-03-29	2019-05-27	2019-05-31	2019-09-23	2019-09-27	2019-11-11	2019-11-15
		D	ZUX200	SAP Fiori System Administration	5	2,625,000	2019-02-11	2019-02-15			2019-08-19	2019-08-23		
		D	GW100	SAP Gateway - Building OData Services	3	1,200,000			2019-05-27	2019-05-29				
SAP HANA	Admin	D	HA200	SAP HANA Installation & Operations	5	2,625,000	2019-03-11	2019-03-15	2019-06-10	2019-06-14	2019-09-23	2019-09-27	2019-12-02	2019-12-06
		D	HA201	SAP HANA - Advanced System Administration	3	1,575,000	2019-03-18	2019-03-20	2019-06-17	2019-06-19	2019-09-30	2019-10-02	2019-12-09	2019-12-11
		D	HA215	SAP HANA Monitoring and Performance Analysis	2	1,050,000	2019-03-21	2019-03-22	2019-06-20	2019-06-21	2019-10-10	2019-10-11	2019-12-12	2019-12-13
		D	HA240	SAP Authorizations, Scenarios & Security Requirements	2	1,050,000			2019-06-26	2019-06-27	2019-10-30	2019-10-31	2019-12-18	2019-12-19
		D	HA250	Migration to SAP HANA using DMO	2	1,050,000	2019-03-25	2019-03-26	2019-06-24	2019-06-25	2019-10-28	2019-10-29	2019-12-16	2019-12-17
	Modeling	D	HA300	SAP HANA Modeling	3	1,575,000	2019-02-25	2019-02-27	2019-06-10	2019-06-12	2019-09-23	2019-09-25	2019-11-25	2019-11-27
	Developer	D	HA400	ABAP Programming for SAP HANA	3	1,575,000	2019-02-18	2019-02-20	2019-06-24	2019-06-26	2019-10-21	2019-10-23	2019-12-09	2019-12-11
SAP NetWeaver	Overview	F	SAPTEC	처음 시작하는 SAP S/4HANA Technical 입문과정	4	2,100,000	2019-01-07	2019-01-10	2019-04-01	2019-04-04	2019-07-01	2019-07-04	2019-10-14	2019-10-17
	Admin	A	KTSEC200	SAP System Security and Authorization Academy	17	6,800,000							2019-10-14	2019-11-12
	Integration	D	BIT800	Process Orchestration Overview	5	2,000,000					2019-09-16	2019-09-20		
	BC	A	KBC300	[아카데미] BC All: Core Platform Technology (인증시험 포함)	25	8,300,000	2019-03-11	2019-04-12	2019-06-10	2019-07-12			2019-11-11	2019-12-13
		A	TADM10	[아카데미] BC 1-2: SAP NetWeaver AS - Implementation and Operation I	10	4,000,000	2019-03-11	2019-03-22	2019-06-10	2019-06-21			2019-11-11	2019-11-22
		D	TADM12	[아카데미] BC 3-4: SAP NetWeaver AS - Implementation and Operation II	10	4,000,000	2019-03-25	2019-04-05	2019-06-24	2019-07-05			2019-11-25	2019-12-06
		D	TADM51	[아카데미] BC 5: SAP NetWeaver AS DB Operation (Oracle)	4	1,600,000	2019-04-08	2019-04-11	2019-07-08	2019-07-11			2019-12-09	2019-12-12
		D	ADM315	AS ABAP - Performance Analysis	3	1,200,000					2019-08-26	2019-08-30		
	ABAP	F	S4D400	Introduction to ABAP Programming for SAP S/4HANA	3	1,200,000	2019-01-21	2019-01-23	2019-04-22	2019-04-24	2019-09-18	2019-09-20	2019-11-06	2019-11-08
		A	KABAP300	[아카데미] ABAP All: Application Development (인증시험 포함)	25	8,300,000	2019-03-11	2019-04-12	2019-06-10	2019-07-12			2019-11-11	2019-12-13
		A	TAW10	[아카데미] ABAP 1-2: ABAP Workbench Fundamentals (Workbench, Dictionary, UI Programming)	10	4,000,000	2019-03-11	2019-03-22	2019-06-10	2019-06-21			2019-11-11	2019-11-22
		A	KBC405	[아카데미] ABAP 3: Report & Database Update	5	2,000,000	2019-03-25	2019-03-29	2019-06-24	2019-06-28			2019-11-25	2019-11-29
		A	TAW12	[아카데미] ABAP 4-5: Workbench Concepts (Object, Dynamic programming, Web Dynpro)	9	3,600,000	2019-04-01	2019-04-11	2019-07-01	2019-07-11			2019-12-02	2019-12-12
F		NET310	Fundamentals of Web Dynpro for ABAP	3	1,575,000			2019-05-13	2019-05-15			2019-12-18	2019-12-20	
A	S4D430	Building Views in Core Data Services ABAP (CDS ABAP)	2	800,000	2019-02-21	2019-02-22	2019-06-27	2019-06-28	2019-10-24	2019-10-25	2019-12-12	2019-12-13		
Cloud Platform	Developer	F	CP100	SAP Cloud Platform	5	2,625,000			2019-06-10	2019-06-14			2019-10-14	2019-10-18
	D	CLD900	Introduction to SAP Cloud Platform Integration (CPI)	3	1,575,000			2019-06-17	2019-06-19			2019-10-21	2019-10-23	
SAP Enable Now	Basic	F	SEN100	SAP Enable Now Training for Standard Autor	3	1,200,000			2019-06-24	2019-06-26			2019-12-09	2019-12-11
	Advanced	D	SEN200	SAP Enable Now Training for Master Authors/Administrators	2	800,000					2019-09-02	2019-09-03		

※ 안내 사항

모든 교육비는 부가세가 포함되지 않은 금액입니다.

상기 일정은 변동 가능성이 있습니다.

커리큘럼을 포함한 교육 정보 확인, 교육 신청은 SAP교육사업본부 홈페이지(www.saptraining.co.kr)를 통해 진행할 수 있습니다.

상기 과정 외 개설을 원하는 과정이 있으면 SAP교육사업본부로 연락 주시기 바랍니다.

I	F	A	D	DK
Introduction	Foundation	Academy	Detailed	Delta Knowledge

Cloud Solution

Solution	Type	Level	Course Code	과정명	교육 일수	교육비 (VAT별도)	Q1		Q2		Q3		Q4	
							시작일	종료일	시작일	종료일	시작일	종료일	시작일	종료일
Ariba	Sourcing	D	KAR700	SAP Ariba 전략구매	5	2,625,000			2019-05-06	2019-05-10			2019-10-14	2019-10-18
	Procurement	D	KAR500	SAP Ariba 조달구매	5	2,625,000			2019-05-06	2019-05-10			2019-10-14	2019-10-18
SAP C/4HANA	Integration	D	HY600	Hybris - SAP Solution Integration	3	1,575,000			2019-06-24	2019-06-26				
	Developer	D	HY430	SAP Hybris Data Hub	3	1,575,000			2019-06-17	2019-06-19				
	Developer	D	HY465	SAP Hybris Commerce Backoffice Framework Developer	3	1,575,000			2019-06-03	2019-06-05				
	Developer	D	HY440	SAP Hybris Commerce Order Management	2	1,050,000			2019-05-29	2019-05-30				
	Developer	D	KHY400	Hybris Commerce Developer (이러닝 포함)	7	3,945,000	2019-02-18	2019-02-26	2019-05-20	2019-05-28			2019-11-04	2019-11-12
	Marketing	D	HY760	SAP Hybris Marketing Customization & Integration	3	1,575,000	2019-03-18	2019-03-20	2019-06-24	2019-06-26				

SAP Analytics

Analytics 아카데미 All 과정은 인증시험 포함 과정입니다. 마지막 주 금요일에 인증시험이 진행됩니다.

Solution	Type	Level	Course Code	과정명	교육 일수	교육비 (VAT별도)	Q1		Q2		Q3		Q4	
							시작일	종료일	시작일	종료일	시작일	종료일	시작일	종료일
BW	Modeling	A	KBW300	[아카데미] BW All: Business Warehousing (인증시험 포함)	20	6,640,000			2019-05-06	2019-05-31			2019-11-18	2019-12-13
		A	TBW10	[아카데미] BW 1: Enterprise Data Warehousing	5	2,000,000			2019-05-06	2019-05-10			2019-11-18	2019-11-22
		A	TBW30	[아카데미] BW 2: BW Modeling & Implementation	5	2,000,000			2019-05-13	2019-05-17			2019-11-25	2019-11-29
		A	TBW50	[아카데미] BW 3: BW Data Acquisition	5	2,000,000			2019-05-20	2019-05-24			2019-12-02	2019-12-06
		A	TBW60	[아카데미] BW 4: BW Operations & Performance	4	1,600,000			2019-05-27	2019-05-30			2019-12-09	2019-12-12
		D	BW462	SAP BW/4HANA	5	2,000,000					2019-09-02	2019-09-06		
		D	BW362	SAP BW powered by SAP HANA	5	2,000,000							2019-10-14	2019-10-18
BI	BI	A	KBI300	[아카데미] BI All: Business Integrate (인증시험 포함)	15	4,980,000					2019-08-19	2019-09-06		
		A	TBI10	[아카데미] BI 1: BW Query Design and Analysis	5	2,000,000					2019-08-19	2019-08-23		
		A	TBI15	[아카데미] BI 2: SAP Business Objects Analysis & Design Studio	5	2,000,000					2019-08-26	2019-08-30		
		A	TBI30	[아카데미] BI 3: Integrating SAP BW with SAP Business Intelligence Solutions	4	1,600,000					2019-09-02	2019-09-05		
		D	PAII10	SAP Predictive Analytics (PA)	5	2,625,000					2019-09-23	2019-09-27		
		D	KBOC310	SAP Crystal Reports	5	2,000,000					2019-09-02	2019-09-06		
		D	KBOW310	SAP BusinessObjects Web Intelligence: Report Design	4	1,600,000					2019-09-23	2019-09-26		
BO	BO	D	DSC100	Introduction to Data Science	2	800,000			2019-06-10	2019-06-11				
		D	DSC200	Delivering an SAP Data Science Project	2	800,000			2019-06-12	2019-06-13				
GRC	GRC	D	FIN900	Auditing of Financial Business Processes in SAP	5	4,500,000	2019-03-25	2019-03-29						
		D	KGRC330	GRC 핵심 과정 (Process Control & Risk Management)	5	4,000,000			2019-02-11	2019-02-15				
		D	KGRC300	GRC 고급 과정	8	5,180,000			2019-04-22	2019-05-02				

※ 안내 사항

모든 교육비는 부가세가 포함되지 않은 금액입니다.

상기 일정은 변동 가능성이 있습니다.

커리큘럼을 포함한 교육 정보 확인, 교육 신청은 SAP교육사업본부 홈페이지(www.saptraining.co.kr)를 통해 진행할 수 있습니다.

상기 과정 외 개설을 원하는 과정이 있으면 SAP교육사업본부로 연락 주시기 바랍니다.



2019년 SAP 정규 교육 일정 안내

2019년 On-Demand 과정

정규 일정으로 진행되는 과정이 아닌, 요청에 따라 개설 가능한 과정입니다.

개설을 원하는 과정이 있으면 담당 영업대표 또는 SAP교육사업본부(education.korea@sap.com)로 연락 주시기 바랍니다.

Solution	Type	Level	Course Code	과정명	교육 일수	교육비 (VAT별도)
All	Integration	D	TERP10	SAP_CMS (Cross Module Specialist) 과정	5	2,000,000
Sybase	IQ 관리자	F	EDB785	SAP IQ Administration (IQ Administration 과정)	5	2,000,000
	ASE 관리자	D	EDB358	System and Database Administration (ASE Administration 과정)	5	2,000,000
	ASE 개발자	D	EDB116	Fast Track to SAP Adaptive Server Enterprise (ASE를 활용한 개발 과정)	5	2,000,000

※ 안내 사항

모든 교육비는 부가세가 포함되지 않은 금액입니다.

커리큘럼을 포함한 교육 정보 확인, 교육 신청은 SAP교육사업본부 홈페이지(www.saptraining.co.kr)를 통해 진행할 수 있습니다.

상기 과정 외 개설을 원하는 과정이 있으면 SAP교육사업본부로 연락 주시기 바랍니다.

2019년 SAP 인증시험 일정

SAP 인증시험센터에서는 교육 이수 후 6개월 이내에 인증시험에 응시하는 것을 권장합니다.

NO	구분	시험 날짜	시험 신청 마감일
1	1월	2019-01-18(금)	2019-01-06(일)
2	2월	2019-02-01(금)	2019-01-20(일)
3		2019-02-23(토)	2019-02-10(일)
4	3월	2019-03-15(금)	2019-03-03(일)
5	4월	2019-04-12(금)	2019-03-31(일)
6	5월	2019-05-04(토)	2019-04-21(일)
7		2019-05-31(금)	2019-05-19(일)
8	6월	2019-06-21(금)	2019-06-09(일)
9	7월	2019-07-12(금)	2019-06-30(일)
10	8월	2019-08-03(토)	2019-07-21(일)
11		2019-08-23(금)	2019-08-11(일)
12	9월	2019-09-06(금)	2019-08-25(일)
13	10월	2019-10-18(금)	2019-10-06(일)
14	11월	2019-11-08(금)	2019-10-27(일)
15		2019-11-23(토)	2019-11-10(일)
16	12월	2019-12-13(금)	2019-12-01(일)

※ 안내 사항

1. 시험 신청 및 결제: SAP교육사업본부 홈페이지(saptraining.co.kr/Certify/apply.asp)에서 가능하며, 응시일 기준 2주 전 일요일 신청 마감됩니다.

2. 시험 취소 및 환불: 신청 기간 내에는 취소 및 환불 가능하나, 인증시험 신청 마감 후에는 환불 불가합니다.

3. 시험 비용(VAT 별도): Associated : 500,000원 / Specialist: 300,000원 / Professional : 750,000원 / CitC : 상시 변동